

CATALOGUE

SOLAR ENERGY | 2023

EVERY STEP OF SOLUTION FOR SOLAR ENERGY



acm

INDUSTRY ALUMINUM

ACM ALU | www.acmendustri.com



*We as a company continue to produce and grow with the pride of realizing many projects in Turkey and around the world for nearly **50 years.***



SOLAR ENERGY



RENEWABLE ENERGY

A GREEN FUTURE



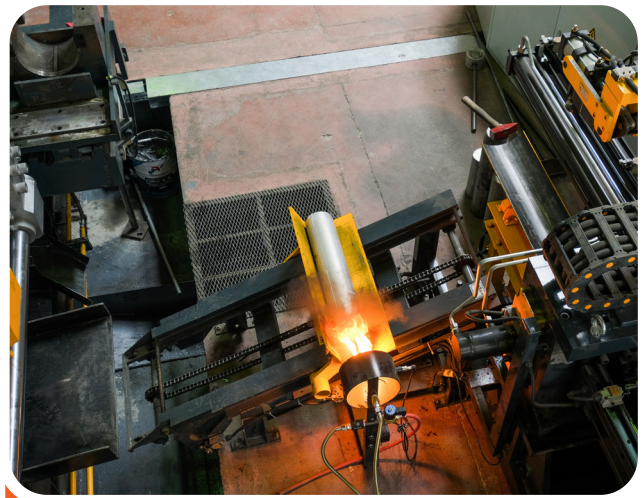
www.acmendustri.com



ABOUT US

*By the end of **2020**, **ACM Industry** has gathered its production facilities and management offices under a single work place and has a better organizational structure and higher quality.*

*The main aim of **ACM Industry** is to guarantee the quality product and the best service. **ACM Industry** is one of the main aluminum profile manufacturers serving different domestic and international industry branches with high quality and qualified service expectations.*



EXPORT CONTRUUES



GERMANY QATAR ITALY DUBAI
SWITZERLAND SPAIN NETHERLANDS
BULGARIA UZBEKISTAN BELGIUM
MOROCCO FRANCE ALGERIA
NIGERIA MACEDONIA UNITED KINGDOM
GREECE P ALESTINE KOSOVA
UNITED STATES ROMANIA


acm
INDUSTRY ALUMINUM

www.acmendustri.com

WHY SOLAR ENERGY IS IMPORTANT?

There's a reason why so many homeowners and businesses are turning to solar power. The benefits are undeniable, and not just for individuals, but for the planet as a whole. Here are just a few of the many reasons that support the importance of solar energy.

IT'S GOOD FOR THE ENVIRONMENT

The difference between solar energy and conventional electricity is that solar energy does not rely on the use of fossil fuels, does not pollute air or water, and does not contribute to global warming, making it the preferable option for many. Solar energy works with the earth's natural resources, whereas conventional electricity depletes or harms them.

IT'S A RELIABLE, COST-EFFECTIVE ENERGY SOURCE

The sun is a renewable energy source. Fossil fuels will eventually run out, but sunlight won't. For that reason, solar energy is highly reliable. And unlike fossil fuels which are expensive to mine and utilize, it doesn't cost anything to receive sunlight. A one-time installation of solar equipment is all that's needed to reap the benefits.

IT SAVES YOU MONEY IN THE LONG RUN

Though the cost of installing solar panels or a solar electric system has decreased in recent years, some may still find the initial investment in solar energy to be intimidating. However, the key is remembering that installation is a one-time event, whereas paying for conventional electricity is a frequent, ongoing, and an expensive obligation, especially as electric rates continue to rise.

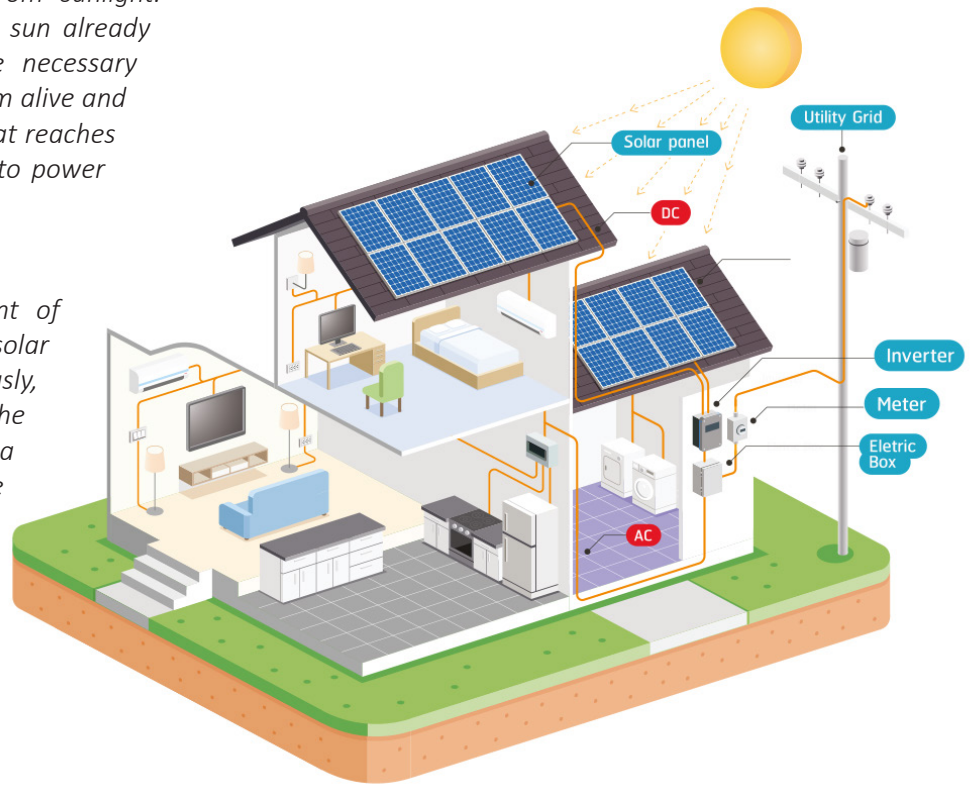
IT PROMOTES ENERGY INDEPENDENCE

Energy independence means not having to rely on the power grid. With no other means of powering your home, you could run into a variety of issues in the event of bad weather or damage to power lines. Using solar energy, especially when paired with a backup battery system, allows you to not be tied to unreliable power grids when you need energy most.



Solar energy is energy derived from sunlight. Whether you realise it or not, the sun already powers our planet, providing the necessary energy to keep the Earth's ecosystem alive and thriving. The amount of sunlight that reaches the earth's atmosphere is enough to power all our needs.

According to the US Department of Energy, 173000 terawatts of solar energy strike the earth continuously, which is more than 10000 times the world's total energy use. The sun is a free, sustainable, clean resource we can utilise in place of conventional electricity to power our day-to-day lives. Solar energy can be used to provide heat, light, and other electricity-dependent needs in residential and commercial buildings.

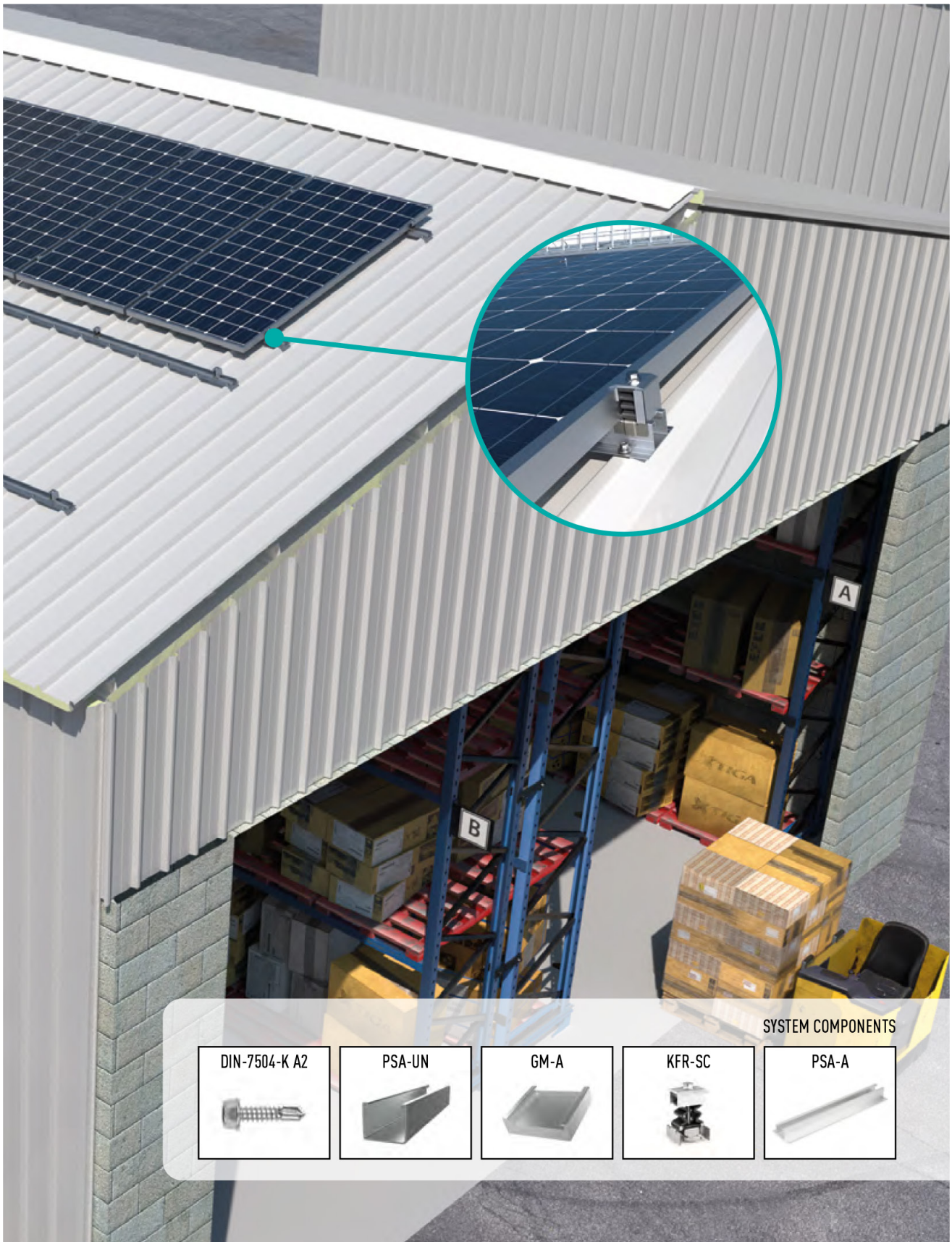


Solar panels are made of highly excitable, conductive materials. When the sun's rays hit the solar panels, the reaction creates direct current (DC) electricity. Do they work even on overcast days? Absolutely, since the sun's rays can still penetrate clouds and reach solar panels.

Since most homes and businesses use alternating current (AC) electricity, your solar-generated DC energy will pass through an inverter to become AC electricity. This energy can be rationed into load for everyday essential appliance use, the rest stored into a battery, reverted back into a grid – entirely dependent on your choice and solar power system goals.

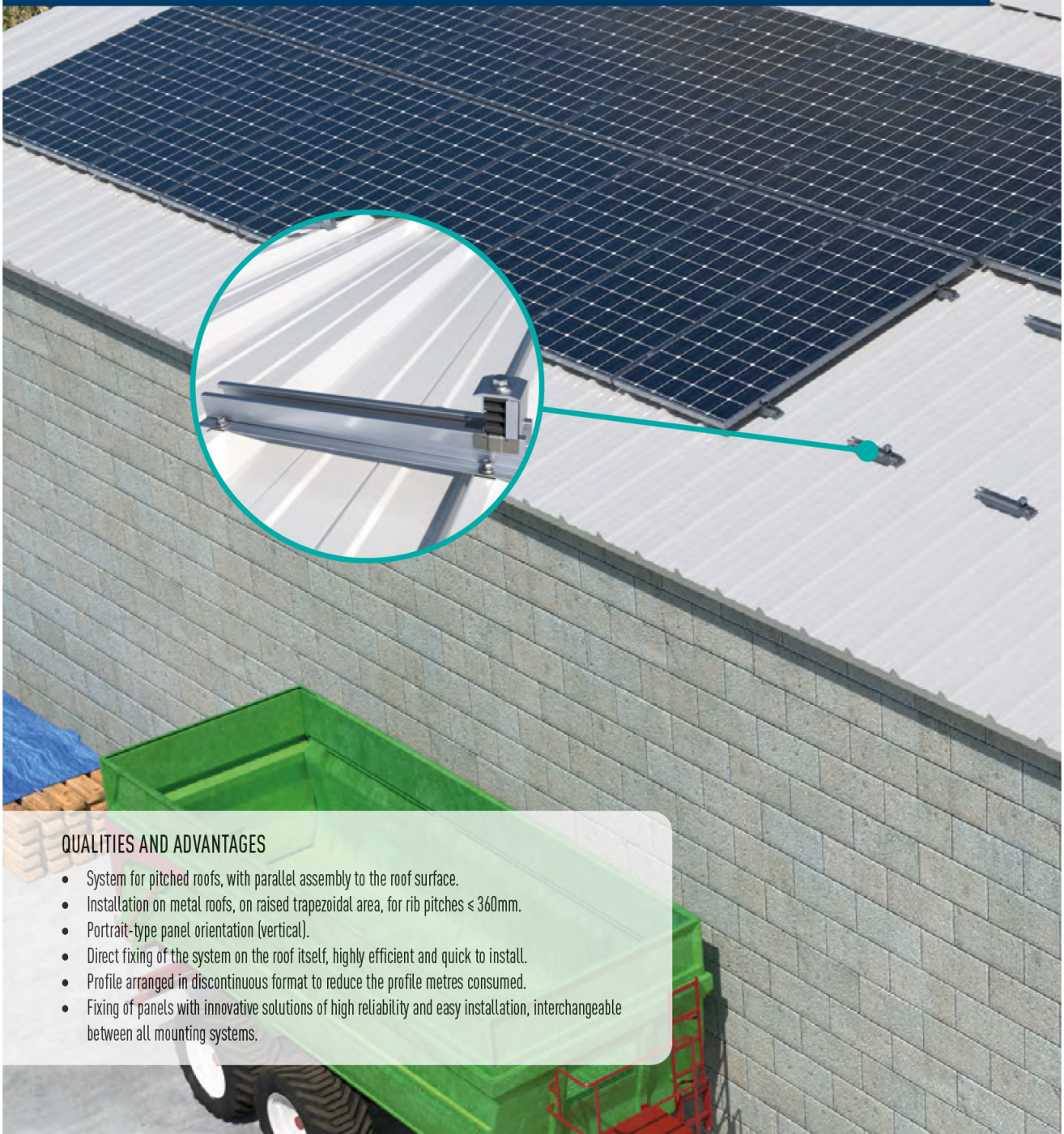
Solar panels enable humanity to maximise solar energy – a free, clean, energy resource. This is a major step in lowering carbon footprint and eventually achieving net-zero. ACM Aluminum's new Energy catalogue aims to promote clean energy access with energy supplies at the best prices, and contributing to economic growth by pushing for energy savings.





SC-PSD

**COPLANAR WITH WINGED ALUMINUM PROFILE (PSA-A).
DIRECT FIXING. DISCONTINUOUS PROFILE FORMAT.**



QUALITIES AND ADVANTAGES

- System for pitched roofs, with parallel assembly to the roof surface.
- Installation on metal roofs, on raised trapezoidal area, for rib pitches ≤ 360 mm.
- Portrait-type panel orientation (vertical).
- Direct fixing of the system on the roof itself, highly efficient and quick to install.
- Profile arranged in discontinuous format to reduce the profile metres consumed.
- Fixing of panels with innovative solutions of high reliability and easy installation, interchangeable between all mounting systems.



SYSTEM COMPONENTS

GM-A



KFR-SC



PSA-A



SC - ACM

COPLANAR WITH WINGED ALUMINUM PROFILE (ACM-A).

DIRECT FIXING





QUALITIES AND ADVANTAGES

- System for pitched roofs, with parallel assembly to the roof surface.
- Installation on all types of roofs, mounted on adjustable fixing accessories.
- Portrait-type (vertical) and landscape-type (horizontal) panel orientation.
- Fixation of assembly system on adjustable fixing accessories, anchored to the roof or substructure, with a wide range of adjustable fixing accessories available.
- Profile arranged in a continuous format to simplify installation planning.
- Connection between profiles using internal profile and self-drilling screws, without interfering with the fixing of panels.
- Fixing of panels with innovative solutions of high reliability and easy installation, interchangeable between all mounting systems.

SYSTEM COMPONENTS

<p>DIN-7504-K A2</p> 	<p>GM-A</p> 	<p>KFR-SC</p> 	<p>KFS-FI</p> 	<p>PSE-UN</p> 	<p>PSE-A</p> 
--	---	---	---	---	--

SC-GPX

**COPLANAR WITH PERFORATED STEEL CHANNEL
ATLANTIS C4-M INDEXTRUT SOLAR GP-XS.**



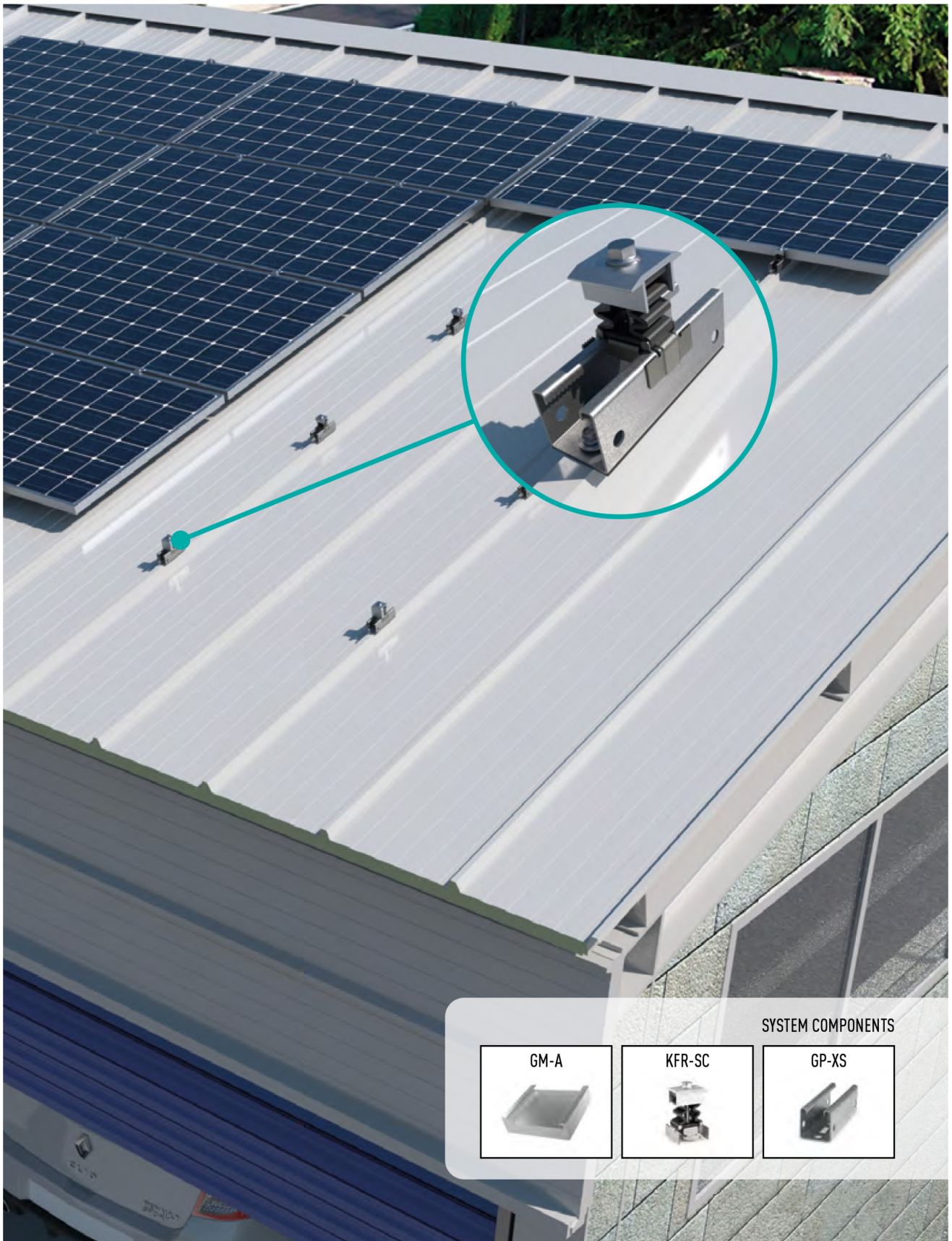


QUALITIES AND ADVANTAGES

- System for pitched roofs, with parallel assembly to the roof surface.
- Installation on all types of roofs, mounted on adjustable fixing accessories or directly fixed.
- Portrait-type (vertical) and landscape-type (horizontal) panel orientation.
- Option of assembled fixing of the system, using adjustable fixing accessories, anchored to the roof or to the substructure, with a wide range of adjustable fixing accessories available.
- Option of direct fixing of the system, using thin sheet screw, in installations on metal roofs.
- Guide arranged in a continuous format to simplify installation planning.
- Longitudinal connection between guides using an internal joint and DIN603 screws for quick assembly, without interfering with the fixing of panels.
- Fixing of panels with innovative solutions of high reliability and easy installation, interchangeable between all mounting systems.

COMP SYSTEM COMPONENTS

<p>DIN-6923 A2</p>	<p>DIN-603 A2</p>	<p>GM-A</p>	<p>KFR-SC</p>	<p>EMP-XS</p>	<p>GP-XS</p>
--------------------	-------------------	-------------	---------------	---------------	--------------



SYSTEM COMPONENTS

GM-A

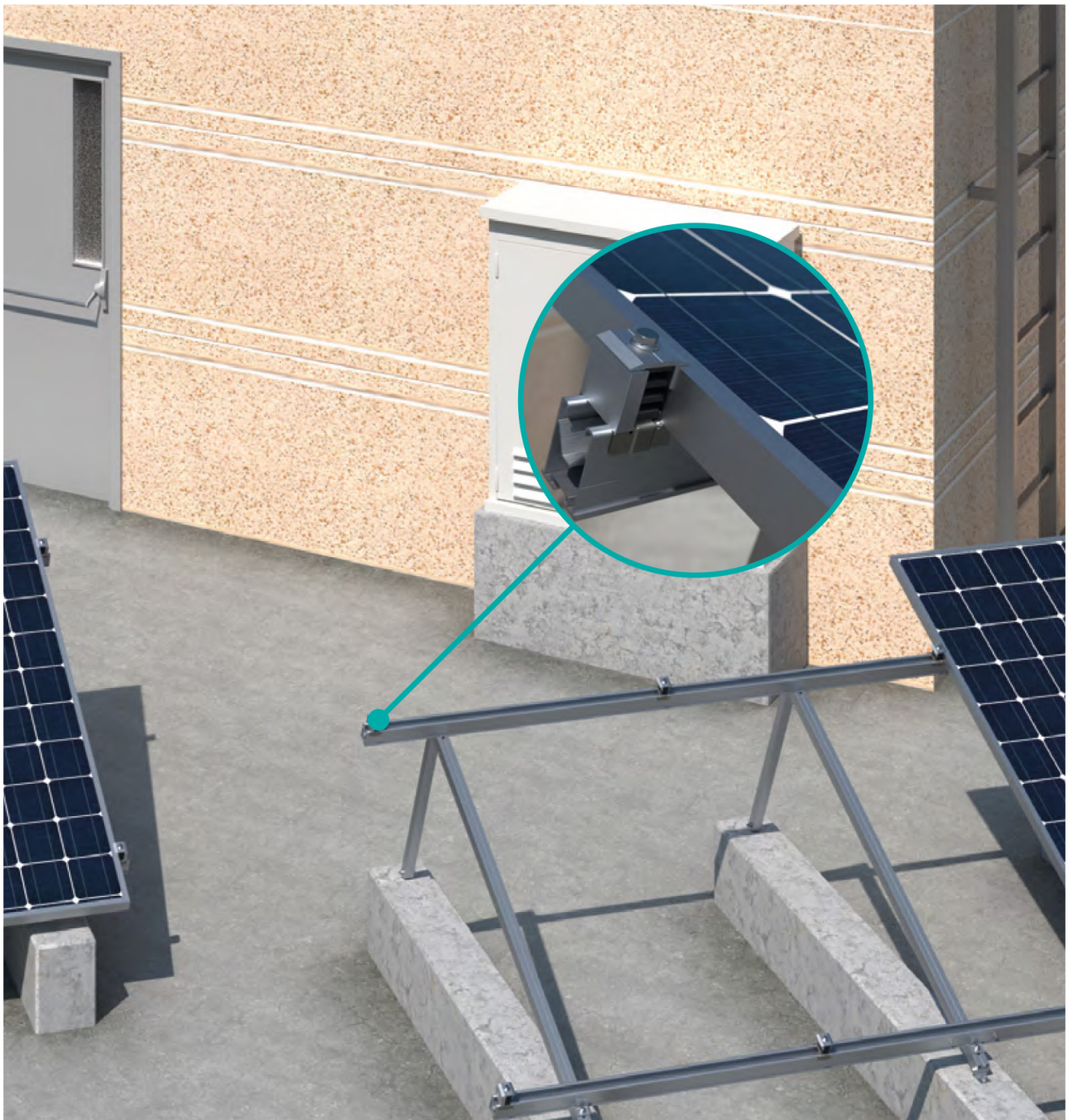


KFR-SC



GP-XS



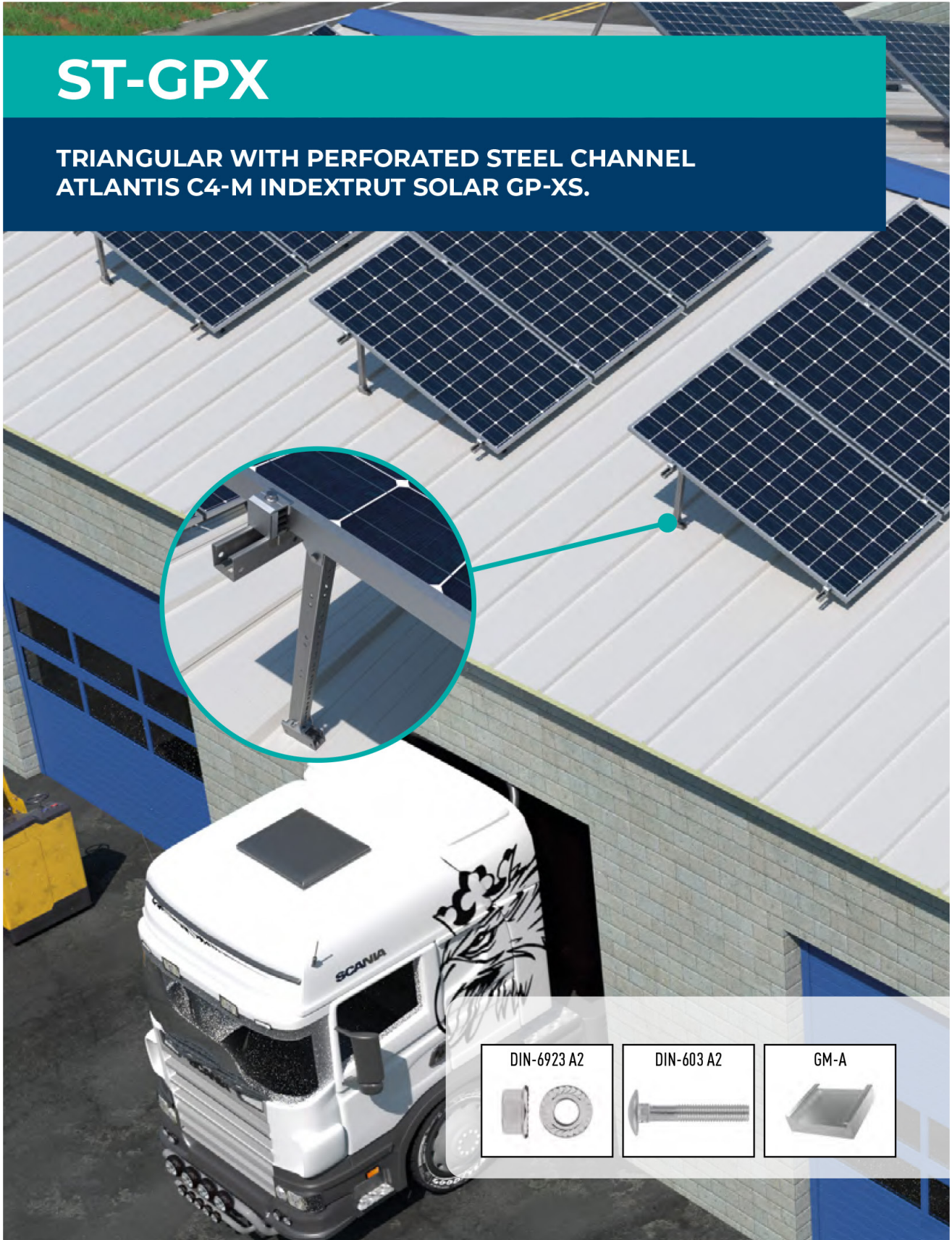


SYSTEM COMPONENTS

<p>GM-A</p>	<p>KFR-SC</p>	<p>TPA-R</p>	<p>KFS-FL</p>	<p>PSE-UN</p>	<p>PSE-A</p>
-------------	---------------	--------------	---------------	---------------	--------------

ST-GPX

TRIANGULAR WITH PERFORATED STEEL CHANNEL
ATLANTIS C4-M INDEXTRUT SOLAR GP-XS.



DIN-6923 A2

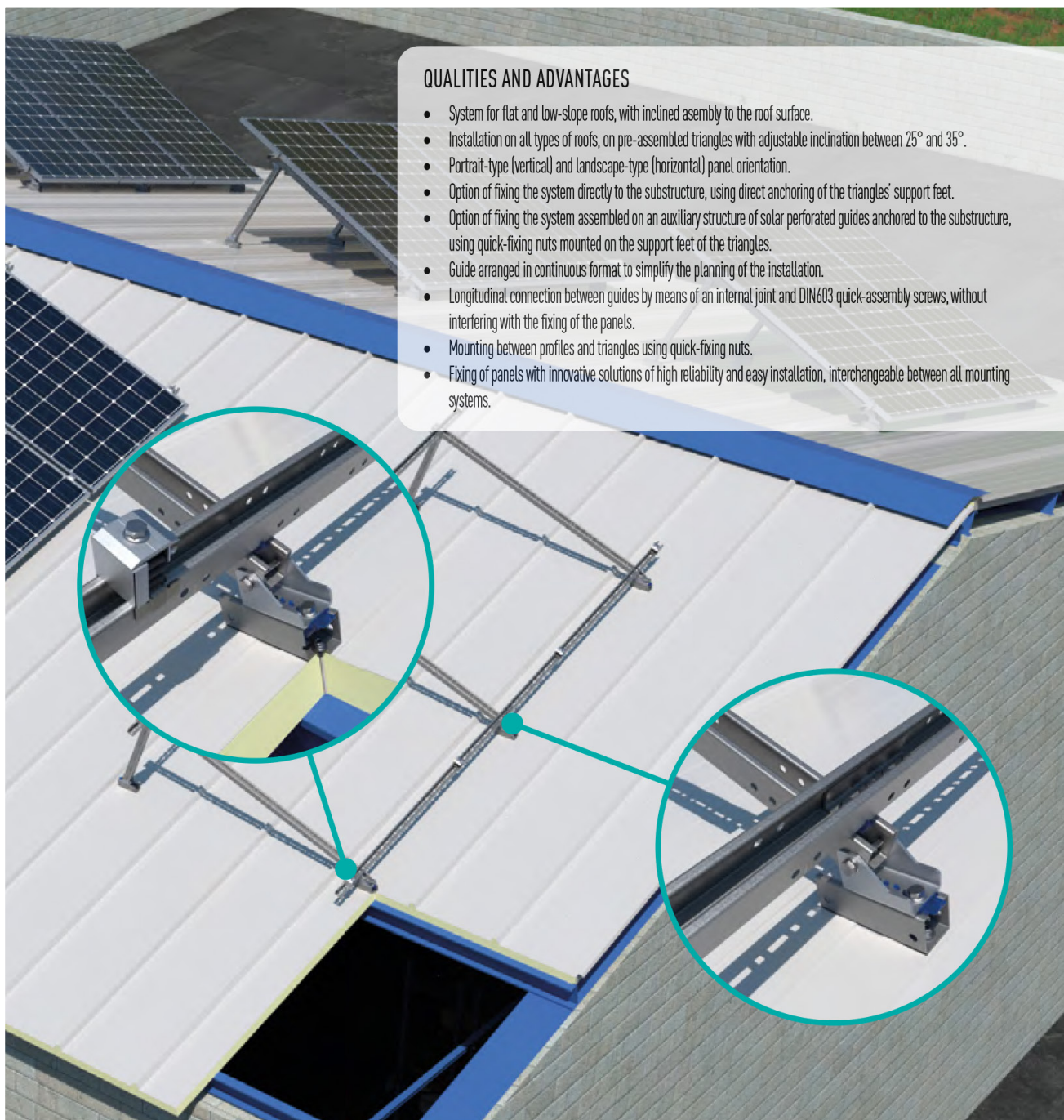


DIN-603 A2



GM-A





QUALITIES AND ADVANTAGES

- System for flat and low-slope roofs, with inclined assembly to the roof surface.
- Installation on all types of roofs, on pre-assembled triangles with adjustable inclination between 25° and 35°.
- Portrait-type (vertical) and landscape-type (horizontal) panel orientation.
- Option of fixing the system directly to the substructure, using direct anchoring of the triangles' support feet.
- Option of fixing the system assembled on an auxiliary structure of solar perforated guides anchored to the substructure, using quick-fixing nuts mounted on the support feet of the triangles.
- Guide arranged in continuous format to simplify the planning of the installation.
- Longitudinal connection between guides by means of an internal joint and DIN603 quick-assembly screws, without interfering with the fixing of the panels.
- Mounting between profiles and triangles using quick-fixing nuts.
- Fixing of panels with innovative solutions of high reliability and easy installation, interchangeable between all mounting systems.

SYSTEM COMPONENTS

<p>KFR-SC</p> 	<p>DIN-6921 A2</p> 	<p>TU-RX A2</p> 	<p>TRP-XS</p> 	<p>EMP-XS</p> 	<p>GP-XS</p> 
---	--	---	---	---	--

Clamps for photovoltaic modules assembly

-  Quick pre-assembled clamp
-  Simple clamp
-  Aluminium gauge for solar frame

Profiles, joints, channels and connectors for supporting structure

-  INDEXTRUT solar perforated guide. Atlantis C4-M
-  INDEXTRUT solar connector. Atlantis C4-M
-  Winged aluminum profile
-  Winged aluminum profile connector
-  Aluminium profile for assembled fixing
-  Connector for aluminium profile for assembled fixing

Connectors + Accessories for the solar structures assembly

-  Cross connector for bottom fixing
-  Cross connector for lateral fixing
-  INDEXTRUT quick nut. Stainless steel A2
-  Screw DIN-603. Round head screw with square neck. Stainless steel A2
-  Screw DIN-6921. Hexagonal flanged bolt with serration. Stainless steel A2
-  DIN-6923 Hexagonal flange nut with serration. Stainless steel A2
-  Grower spring washer DIN-127. Stainless steel A2

Triangular structures for the solar panels installation

-  Pre-assembled and adjustable aluminium triangle
-  Strut profile for pre-assembled aluminium triangle
-  Pre-assembled and adjustable triangle INDEXTRUT. Steel with Atlantis C4-M coating
-  Articulated joint INDEXTRUT. Steel with Atlantis C4-M coating

Clamps for photovoltaic modules assembly



ACM - SC

Quick pre-assembled clamp

CODE	SIZE (mm)			
ACMSC1002	30 - 50	13	10	240



ACM - PSC

Simple clamp



CODE	SIZE (mm)		
ACMPSC12	26	20	720



ACM - GM

Aluminium gauge for solar frame



CODE	SIZE (mm)		
ACMGM2001	35	10	120
ACMGM204	40	10	120

ACM - SC

Quick pre-assembled clamp

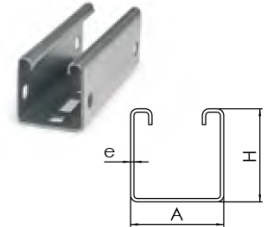


- **Quick-fastening compound clamp valid for all mounting systems.**
- **A single reference** capable of fastening both intermediate and end-of-row plates.
- **Adjustable in height between 30 and 50 mm** to fit the plate frames available on the market.
- **Easy positioning** by pressure and a simple 90° turn by hand, thanks to its EPDM spring which facilitates installation.
- **Increased gripping capacity on the plates and increased profile strength**, thanks to its innovative metal bridge that provides reliability with its serrated lower gripping area and reinforced structure.
- **Robust solution for the fixing of row ends**, thanks to a high-strength upper profile with lower serration that implements solid guided gauges that provide additional safety.
- **Innovative application of electrical shunting** between the solar panel frame and the supporting structure, obtained through the toothed contact areas of the metal bridge.


Profiles, joints, channels and connectors for supporting structure
ISF-PU

solar perforated guide. Atlantis C4-M

CODE	A x H x e (mm)	LENGTH (mm)	
	41 x 41 x 1,5	125	50
	41 x 41 x 1,5	1.625	10
	41 x 41 x 1,5	2.125	10
	41 x 41 x 1,5	3.250	6




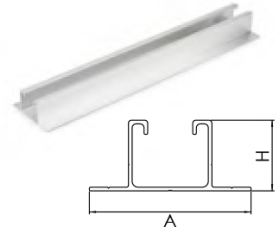
solar connector. Atlantis C4-M

CODE	VALID FOR GUIDE GP-XS	LENGTH (mm)	
	41 x 41 x 1,5	120	40



PSA-A

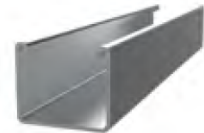
Winged aluminum profile

CODE	A x H (mm)	LENGTH (mm)	
PSAA0400	80 x 35	400	20
PSAA2125	80 x 35	2.125	2
PSAA3150	80 x 35	3.150	2


PSA-UN

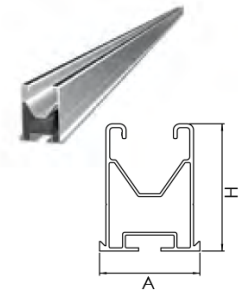
Winged aluminum profile connector

CODE	LENGTH (mm)	VALID FOR PROFILE	
PSAUN200	200	PSA-A	10



PSE-A

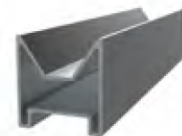
Aluminium profile for assembled fixing

CODE	A x H (mm)	LENGTH (mm)	
PSEA601575	47 x 60	1.575	2
PSEA602125	47 x 60	2.125	2
PSEA603150	47 x 60	3.150	2


PSE-UN

Connector for aluminium profile for assembled fixing

CODE	SIZE (mm)	VALID FOR PROFILE	
PSEUN060200	60 x 200	PSE-A	10



Triangular structures for the solar panels installation

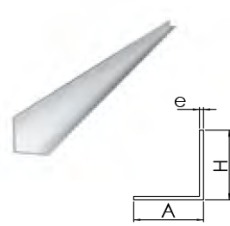
ACMSP

CODE	LENGTH (mm)	INCLINATION	VALID FOR GUIDE	
TPACMSP0001	1.500	25° / 30° / 35°	PSE-A	4



ACMSP

CODE	A x H (mm)	LENGTH (mm)	a (mm)	
TPACMSP012	35 x 35	2.000	2	10



ACMSP

CODE	LENGTH (mm)	INCLINATION	VALID FOR GUIDE	
TPACMSP0002	1.500	25° - 35°	GP-XS	4



ACMSPM

CODE	METRIC	VALID FOR GUIDE		
NACMSP0001	M8	GP-XS	10	100




Qualities and advantages

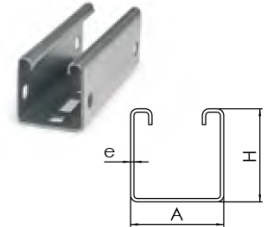
- Pre-assembled structures for quick installation.
- Available in two versions to suit every need:
 - Aluminium
 - Atlantis C4-M steel
- Allows installations with adjustable inclinations between 25° and 35°.
- Screws included in A2-70 stainless steel.
- Suitable for panel dimensions up to 72 cells (approx. 1.000 x 2.000 mm).




Profiles, joints, channels and connectors for supporting structure
ISF-PU

solar perforated guide. Atlantis C4-M

CODE	A x H x e (mm)	LENGTH (mm)	
	41 x 41 x 1,5	125	50
	41 x 41 x 1,5	1.625	10
	41 x 41 x 1,5	2.125	10
	41 x 41 x 1,5	3.250	6



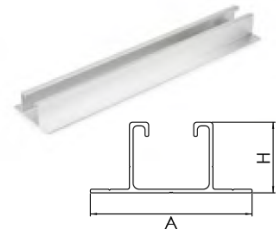
solar connector. Atlantis C4-M

CODE	VALID FOR GUIDE GP-XS	LENGTH (mm)	
	41 x 41 x 1,5	120	40



PSA-A

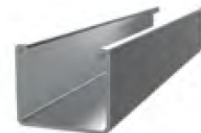
Winged aluminum profile

CODE	A x H (mm)	LENGTH (mm)	
PSAA0400	80 x 35	400	20
PSAA2125	80 x 35	2.125	2
PSAA3150	80 x 35	3.150	2



PSA-UN

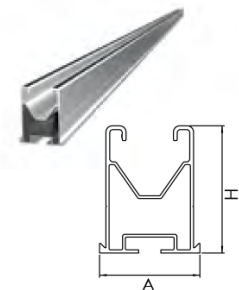
Winged aluminum profile connector

CODE	LENGTH (mm)	VALID FOR PROFILE	
PSAUN200	200	PSA-A	10



PSE-A

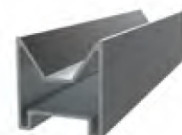
Aluminium profile for assembled fixing

CODE	A x H (mm)	LENGTH (mm)	
PSEA601575	47 x 60	1.575	2
PSEA602125	47 x 60	2.125	2
PSEA603150	47 x 60	3.150	2


PSE-UN

Connector for aluminium profile for assembled fixing

CODE	SIZE (mm)	VALID FOR PROFILE	
PSEUN060200	60 x 200	PSE-A	10



Kits for solar installations

KT - ACMSP



Triangular with PSE-A aluminium profile. Assembled fixing

CODE	N° MODULES	PLATE HEIGHT (mm)	INCLINATION	
KTACMSP0001	2	35	25° / 30° / 35°	1
KTACMSP0001	2	40	25° / 30° / 35°	1
KTACMSP0001	3	35	25° / 30° / 35°	1
KTACMSP0001	3	40	25° / 30° / 35°	1



KT - ACMS



Triangular with perforated steel channel Atlantis C4-M INDEXTUT SOLAR GP-XS

CODE	N° MODULES	PLATE HEIGHT (mm)	INCLINATION	
KTACMS0001	2	35	25° - 35°	1
KTACMS0002	2	40	25° - 35°	1
KTACMS0003	3	35	25° - 35°	1
KTACMS0004	3	40	25° - 35°	1



TECHNOLOGY makes us.



Processing profiles and sheets

We use ultra-modern CNC processing centres.

Surface finishes

We offer the ideal surface finish, whether you need a decorative or technical solution.

Extrusion presses

ACM Alu produces superior-quality aluminium profiles.

Development and advice

We provide support right through to the finished product. Our experienced expert technicians are with you all the way to be sure every great idea develops into a perfect solution.

Welding technology

Our team of qualified professionals work under the supervision of a certified specialist welding technician to guarantee the toughest challenges are met with supreme quality craftsmanship.

Component group manufacture

We produce Professional A-Z solutions. Many years of experience combine with the latest manufacturing technologies to facilitate the assembly of even the most complex bespoke structures.

NOTES

A large rectangular area with a dotted border, containing 20 horizontal dotted lines for writing notes.

NOTES

Large dashed-line box containing horizontal lines for taking notes.



acm

INDUSTRY ALUMINUM



EVERY STEP OF SOLUTION FOR SOLAR ENERGY